



# PipeFitPro V4.0

Email enquiries to: [sales@s9design.com](mailto:sales@s9design.com)

USA/Canada Phone: 1-866-503-4415

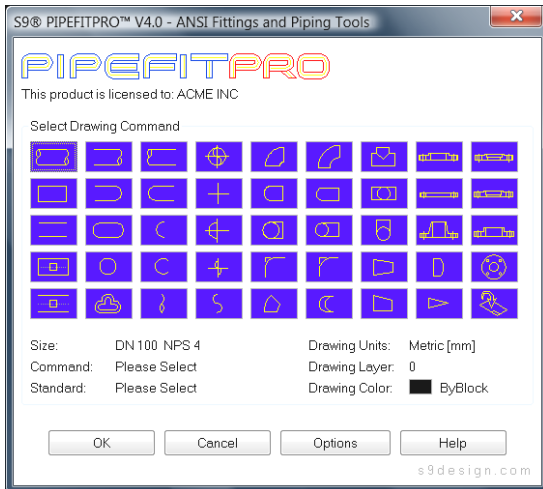
International Phone: +61 3 9815 0640 Fax: +61 3 9819 0110

PipeFitPro can be downloaded and purchased online at <http://www.s9design.com/downloads.htm>

## 2D Piping

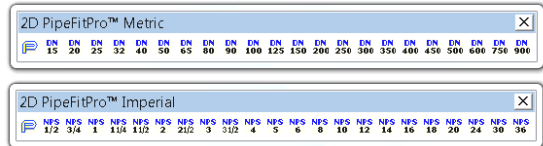
### PipeFitPro Add-on For AutoCAD®

PipeFitPro offers a quality set of ANSI Standard piping tools and fittings for AutoCAD® software – including AutoCAD® 2009. With PipeFitPro you can quickly draw double line piping and fitting arrangements.



## Intuitive

The PipeFitPro toolbars provide both Metric and US Imperial units and gives you access to 2D piping tools with one click by selecting a size. NOTE CustomPipe can be accessed by clicking on the 'P' button.



## Incorporate Existing Fittings and Valves

PipeFitPro allows you to incorporate any existing blocks you have by using the insert blocks command (the bottom right command). Set insertion paths for each size in PipeFitPro Options.

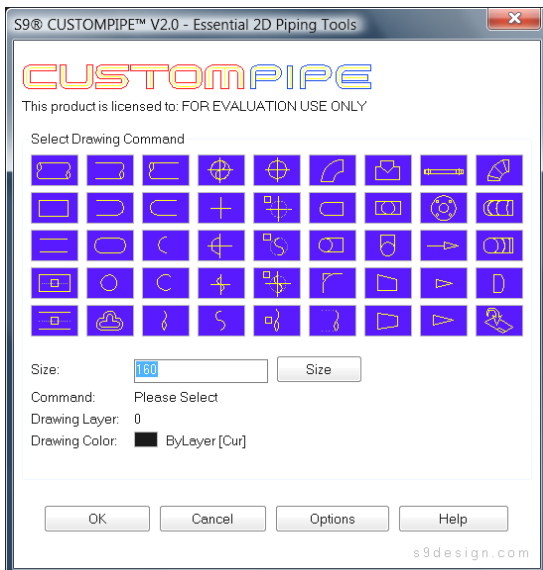
## Easy Installation & Short Learning Curve

PipeFitPro can easily be installed or uninstalled on your PC & AutoCAD, allowing you to test and use hassle free piping software today, while it's simple interface allows new designers to quickly find their way.

## Flexible

### CustomPipe

CustomPipe is included with PipeFitPro, and offers a set of piping tools for any pipe size. Most of the PipeFitPro piping tools are included plus a few specific piping commands such as segmented bends, which makes designer any size pipe line or round duct easier.



## Accurate Design Tools

Create accurate drawings with various pipe drawing routines, pipe sections and ends. PipeFitPro draws all parts using normal AutoCAD objects, ensuring 100% compatibility and ease of use.

## PipeFitPro Features

- Imperial Sizes NPS 1/2"-36"
- Metric Sizes DN 15-900
- ANSI B36.9 90° Long Radius Elbow
- ANSI B36.9 Long Radius Elbow Fillet
- ANSI B36.9 45° Long Radius Elbow
- ANSI B36.9 90° Short Radius Elbows
- ANSI B36.9 Short Radius Elbow Fillet
- ANSI B16.9 Tees Equal and Reducing
- ANSI B16.9 Reducers Conc. & Ecc.
- ANSI B16.9 Caps
- ANSI B16.5 Slip-on Flanges
- ANSI B16.5 Weld Neck Flanges
- ANSI B16.5 Socket Weld Flanges
- ANSI B16.5 Blind Flanges
- ANSI B16.5 Threaded Flanges
- ANSI B16.5 Lapped Flanges
- ANSI B16.5 Blind Flange face
- ANSI Flanges Class 150 to 2500
- ANSI Flanges PN 20 to PN 420
- ANSI B36.10 Pipes & Line Breaks
- ANSI B36.10 Pipe Centre Lines
- ANSI B36.10 Offset Half Pipe Diameter
- ANSI B36.10 Pipe Down

## CustomPipe

- Draw Open Pipes
- Draw Closed Pipes
- Convert Lines to Open Pipes
- Convert Lines to Closed Pipes
- Fillet Elbows
- Insert Pipe Centre Lines
- Add Pipe Centre Lines to Pipes
- Pipe 'S' Cuts
- Pipe Down
- Pipe Section
- Pipe Half Section
- Pipe Line End
- Offset Half Pipes Diameter
- Segmented Bends
- Flow Arrows
- Flange Face
- Flange Plan
- Concentric Reducer
- Eccentric Reducer
- Tees Front, Top & Side
- Cap
- 90° Elbow Front, Up & Down
- Save Pipe Sizes

## System Requirements

Windows 2000/XP/Vista 32 & 64

AutoCAD® Versions 2000, 2000i, 2002, 2004, 2005, 2006, 2007, 2008, 2009