



3D PipeFitPro V1.2

Email enquiries to: sales@s9design.com

USA/Canada Phone: 1-866-503-4415

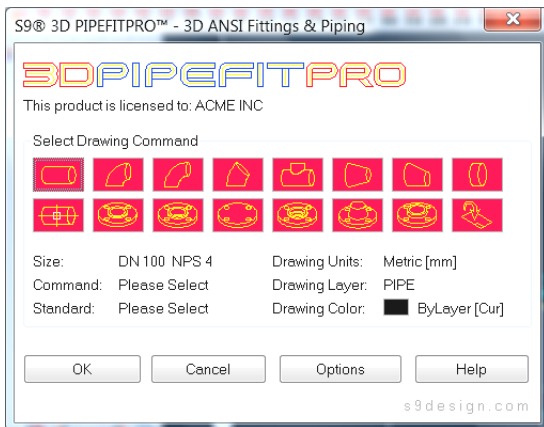
International Phone: +61 3 9815 0640 Fax: +61 3 9819 0110

PipeFitPro can be downloaded and purchased online at <http://www.s9design.com/downloads.htm>

3D Piping

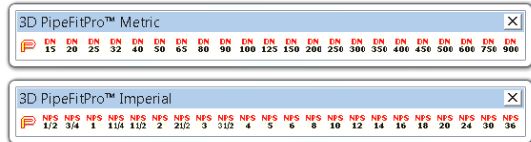
3D PipeFitPro Add-on For AutoCAD®

3D PipeFitPro offers a quality and affordable set of 3D ANSI Standard piping tools and fittings for AutoCAD® software – including AutoCAD® 2009. With 3D PipeFitPro you can quickly model piping and visualize, simulate, and analyze the real-world performance of designs today.



Intuitive

The 3D PipeFitPro toolbars provide both Metric and US Imperial units and gives you access to 3D piping tools with one click by selecting a size. NOTE 3D CustomPipe can be accessed by clicking on the 'P' button.



Incorporate Existing Fittings and Valves

3D PipeFitPro allows you to incorporate any existing blocks you have by using the insert blocks command (the bottom right command). Set insertion paths for each size in 2D/3D PipeFitPro Options.

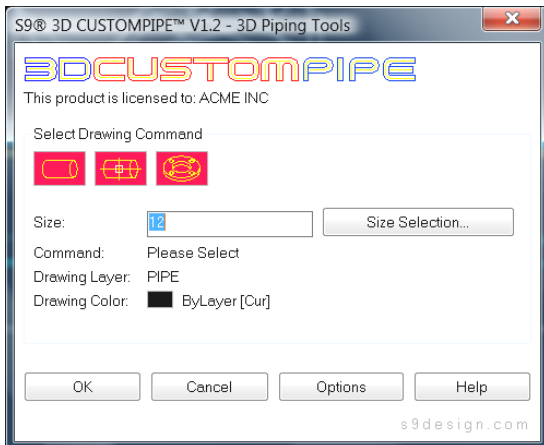
Easy Installation & Short Learning Curve

3D PipeFitPro can easily be installed or uninstalled on your PC & AutoCAD®, allowing you to test and use hassle free piping software today, while it's simple interface allows new designers to quickly find their way. Enjoy the simplicity of one installation of PipeFitPro – 2D and 3D.

Flexible

3D CustomPipe

3D CustomPipe is included with 3D PipeFitPro, and offers a set of piping tools for any pipe size. Convert lines, arcs and polylines to any size pipe in one go, or draw any size plate flange in seconds.



Features

3D PipeFitPro

- Imperial Sizes NPS 1/2"-36"
- Metric Sizes DN 15-900
- ANSI B36.9 90° Long Radius Elbow
- ANSI B36.9 45° Long Radius Elbow
- ANSI B36.9 90° Short Radius Elbows
- ANSI B16.9 Tees Equal and Reducing
- ANSI B16.9 Reducers Conc. & Ecc.
- ANSI B16.9 Caps
- ANSI B16.5 Slip-on Flanges
- ANSI B16.5 Weld Neck Flanges
- ANSI B16.5 Socket Weld Flanges
- ANSI B16.5 Blind Flanges
- ANSI B16.5 Threaded Flanges
- ANSI B16.5 Lapped Flanges
- ANSI Flanges Class 150 to 2500
- ANSI Flanges PN 20 to PN 420
- ANSI B36.10 Pipes point to point
- ANSI B36.10 Convert lines, arcs and polylines to pipes

3D CustomPipe

- Model Pipes point to point
- Convert lines, arcs and polylines to pipes
- Model any size Flange

Other Features

- Identical pipes and fittings sizes to 2D PipeFitPro
- Standard AutoCAD objects used
- AutoCAD® settings, drawing variables and operation speed not affected.
- Easy to load, unload and operate.
- License allows installation and unlimited use on 2 PC's.
- Bonus 3D Toolbar includes enhanced AutoCAD commands and special custom 3D specific commands.
- Extensive Help & User Documentation.

Precision

Accurate Design Tools

Create accurate drawings with easy to use piping commands which work the way you do. 3D PipeFitPro draws all parts using normal AutoCAD 3D solids, ensuring 100% compatibility and ease of use, while using minimum RAM and CPU power.

Compatible

System Requirements

Windows 2000/XP/Vista 32 & 64

AutoCAD® Versions 2000, 2000i, 2002, 2004, 2005, 2006, 2007, 2008, 2009